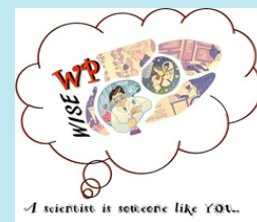


**WILLIAM PATERSON UNIVERSITY  
WOMEN IN SCIENCE AND ENGINEERING (WISE)**



**INVITED SEMINAR SERIES PRESENTS...**

# **THE CHOICE OF A NON-LINEAR CAREER PATH IN SCIENCE**

**by Mayara P. V. Matos, PhD**

**Staff Fellow Biologist**

**Center for Food Safety and Applied Nutrition**

**U.S. Food and Drug Administration**

Dr. Matos has been involved in several interdisciplinary projects throughout her career, including research in plant biochemistry, pharmacology, forensics, and food science. Her current research interests focus on the development of analytical methods to address safety issues in seafood, such as the identification and quantification of metabolites that indicate seafood decomposition. Dr. Matos' seminar will detail her professional journey to the FDA and her ongoing research.



**TUESDAY | FEBRUARY 27, 2024  
12:30 PM | VIRTUAL PRESENTATION**

All WPU students are welcome. See email for Zoom link.  
For more information, contact Dr. Healey (healeyk3@wpunj.edu)